

DOT-106A500X Ton Containers

106A500X Ton Tank for Chlorine Service

Carbon steel DOT Class 106A forge-welded multi-unit tank car tanks or "ton tanks" for chlorine or other aggressive gases, such as anhydrous ammonia and sulfur dioxide.

Columbiana DOT-106A containers have the exclusive safety-engineered feature of "inverted heads" if a container is accidentally over-pressurized, the heads will reverse (become convex), providing an immediate visual indication of over-pressurization. The reversed heads also create additional capacity to reduce the pressure and provide valuable time for corrective action.

Our DOT-106A tanks are independently inspected by our resident authorized inspection agency to meet US DOT 106A500X specifications, Chlorine Institute drawing #197.2 and IMDG Code (CA 1996070013). We manufacture both standard and metric capacity models.



106A500X



CBC

Columbiana Boiler Company

Quality Steel Fabrication Since 1894

US DOT 49 CFR 179.300

Chlorine Institute Approved

ASME Certified Welders & NDT Level III Inspectors

DOT-106A500X Ton Containers

Forge Welded Pressure Vessel

Since 1936, Columbiana Boiler has manufactured over 200,000 transport containers for hazardous liquids and gases. Shown here is CBC's unique "forge welder" used to make the high integrity end welds.

Liquid and Pressure Controls

- Two (2) service valves (liquid & vapor), with CGA 820 or 660 outlets, located within a heavy-duty protective bonnet
- Pressure relief devices (fusible plugs and/or spring-loaded pressure relief devices)

Commodities

- Approved for most Class 2 gases including PIH gases of Div. 2.3 (Zones B, C, D) such as: chlorine, ammonia, hydrogen sulfide, nitrogen tetroxide, etc.
- Also approved for most Class 3 flammable liquids, Class 4 pyrophoric/dangerous when wet materials, and Class 6 toxic/infectious liquids.

Finishing

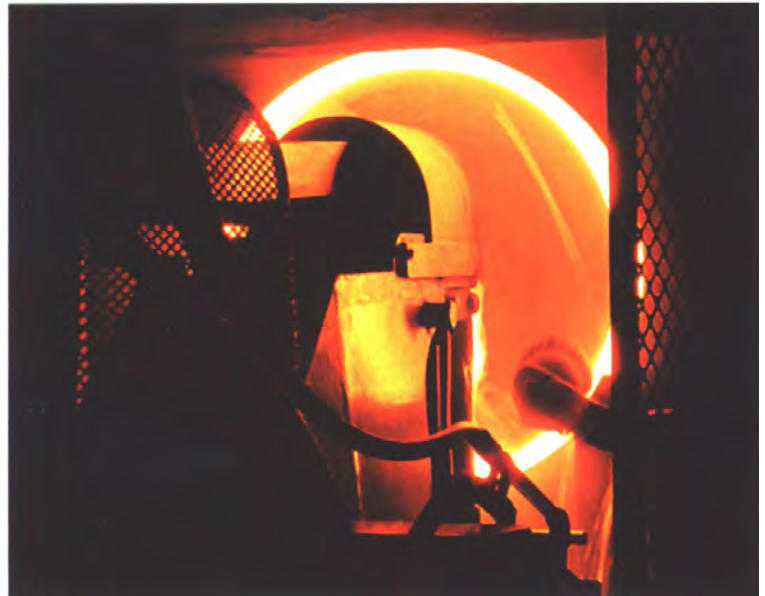
- Exterior: Commercial grit blasting followed by primer and one color topcoat system
- Interior: Grit blasting followed by vacuum cleaning

Shipping

- per 20' Intermodal container: 13
- per 40' Intermodal container: 29
- per truck trailer up to: 31

Options

- Gas tight bonnet
- Training Ends
- Shipping Skids
- Emergency Safety Kits
- Valves, Plugs and all other spare parts



Design Characteristics

- ASTM A-285 Grade A carbon steel
- Test pressure = 500 psig (34.5 bar)
- Service temperature = -20 to 140°F (-28.9 to 60°C)

Weights and Sizes

	standard ton		metric ton	
Capacity	193 gal	731 lt.	212 gal	803 lt.
Diameter	30"	762mm	30"	762mm
Length	81.5"	2,070mm	88.5"	2,248mm
Tare weight	1,400 lbs.	635 kg	1,475 lbs.	669 kg

Payload CL2* 2,000 lbs. 907 kg 2,204 lbs. 1,000 kg
*at 125% filling density (1.25 kg/l) for chlorine: payload for other commodities varies by filling density.



MADE IN USA



CBC

Columbiana Boiler Company, LLC
200 West Railroad St.
Columbiana, OH 44408 USA

Toll-free: 888-266-5125

Tel: (330) 482-3373

Fax: (330) 482-3390

sales@cbco.com

www.cbco.com